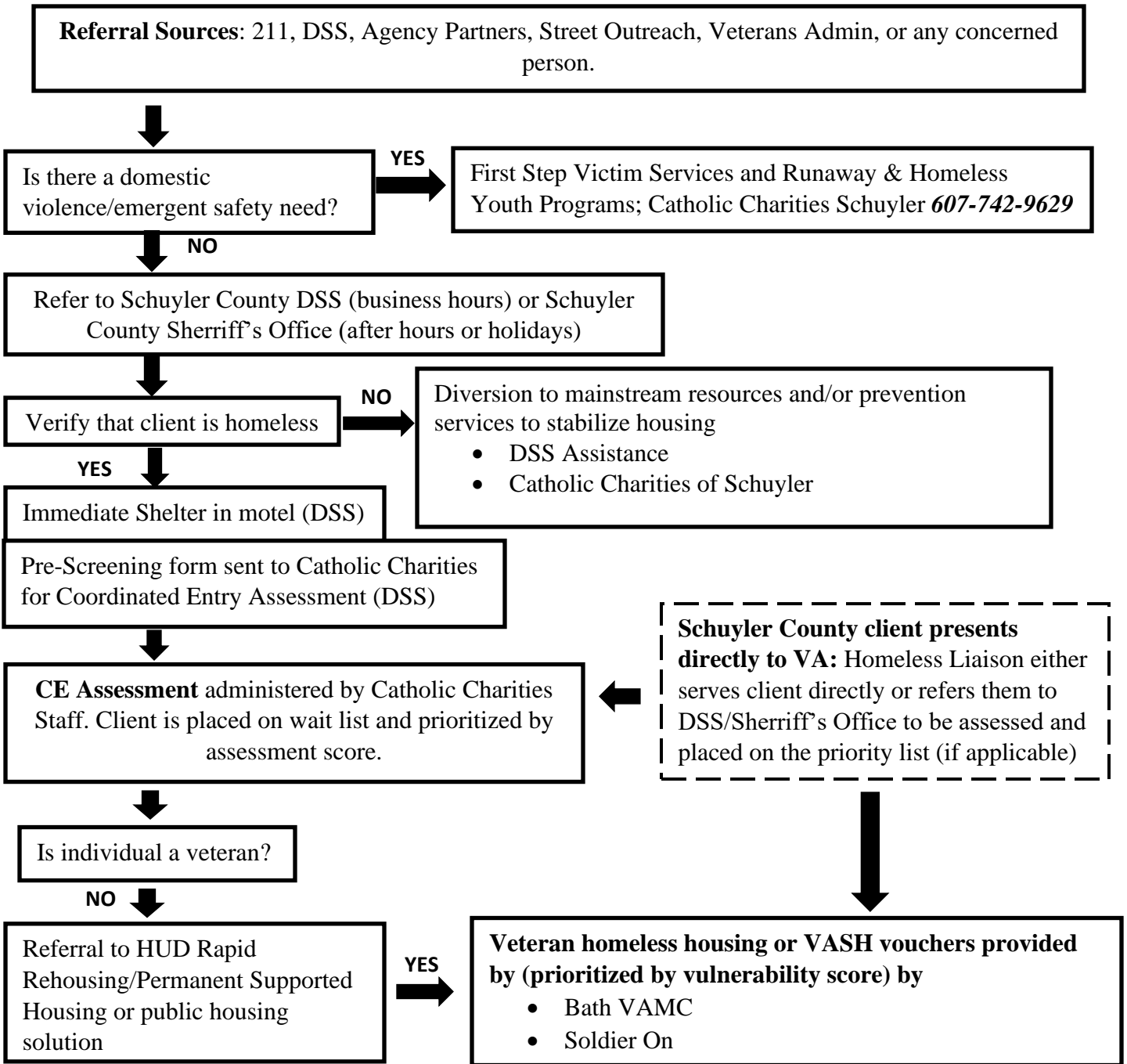


Catholic Charities of Chemung/Schuylers Schuylers County Coordinated Entry Decision Tree

April 2023



Homeless Definition: Individual or family who lacks a fixed, regular, and adequate nighttime residence, meaning:

- i. Has a primary nighttime residence that is a public or private place not meant for human habitation;
- ii. Is living in a publicly or privately operated shelter designated to provide temporary living arrangements (including congregate shelters, transitional housing, and hotels and motels paid for by charitable organizations or by federal, state and local government programs);
- iii. Is exiting an institution where (s)he has resided for 90 days or less and who resided in an emergency shelter or place not meant for human habitation immediately before entering that institution

Categories of homeless include experiences of those who: Are trading sex for housing, Are staying with friends, but cannot stay there for longer than 14 days, Are being trafficked, Left home because of physical, emotional, or financial abuse or threats of abuse and have no safe, alternative housing